



X7

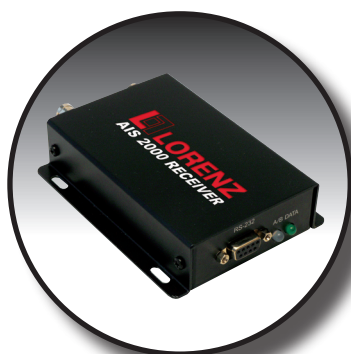
- Easy, reliable, secure.
- LCD TFT colour display totally visible in sunlight.
- Water proof: Designed for marine external use.
- External dual frequency SD Pro Fish Finder. High power black box. Up to 1 Kw (RMS) power output. Up to 800 m depth range.
- Safety improving: the new AIS function displays the position of commercial ships on your route with anticollision alarm (feature available by connecting the AIS receiver).
- Echo sounder function with alarm indicating danger of shallow and deep waters.
- **NEW** "X7 FISH" version with built-in double frequency digital fish finder module.
- "Guardian Alarm" function informs you of underwater obstacles including rocks or reefs.
- "Route checking function" tests the safety of your route and helps you to navigate the right path.



NEW
Get the V2.0 enhanced navigation functions on your chartplotter



Weather Forecast Kit
Allows you to receive up to the minute weather forecasts along your route. All data is free of charge to LORENZ customers



AIS 2000 Receiver
Allows you to display ships' position on chartplotter



Rapid disconnecting appliance
easily remove from base for portability



One Touch To Choose Your World



What's the difference?

Compact X7 has a built-in 16 ch GPS module and a fast disconnecting appliance.

SKY X7 has an aerial 16 ch GPS module, it could be installed using a fast disconnecting appliance of the flush mount kit.

NEW



X7 FISH

GPS Chartplotter with Built-in Hi Power (600 W RMS) Double frequency Fish Finder Module

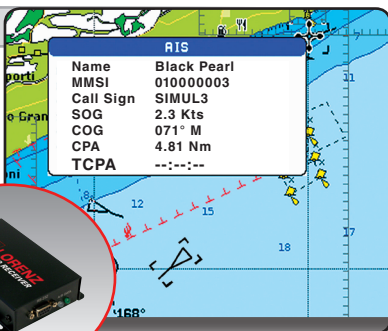
**DOUBLE
50-200 KHZ
FREQUENCY**

**600 W
RMS**

Optionals

AIS Receiver

AIS function displays commercial ships' position on your route and also allows you to set the anti-collision alarm (feature available by connecting the AIS2000 receiver or AIS3000 transponder).

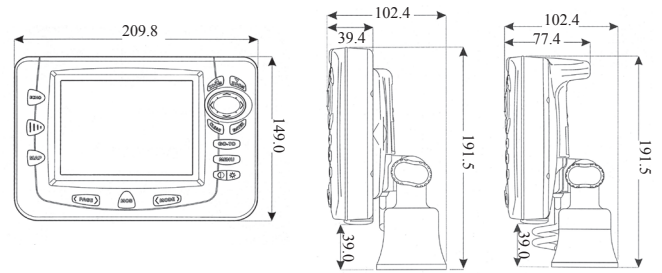


Weather Forecast KIT

Allows you to receive up to the minute weather forecast along your route. Also gauges temperature, wave height, wind speed and direction and displays them clearly on LCD screen.



Dimensions:



V2.0 Software features:



- Background satellite images
- Auto Route checking
- Multilanguage chart details
- Enhanced Real Time ZOOM

MAIN CHARACTERISTICS:

- Very fast zoom and chart redraw
- 8 languages menu
- Preview multifunction pages selection
- Split screen function
- Custom function button
- Mark, Event, Waypoint positioning 500 points max
- 16 different icons for user points
- 25 routes
- EBL function (Electronic Bearing Line)
- VRM function (Variable Range Mark)
- MOB function (Man Over Board)
- Fast disconnect mounting bracket
- GO TO function "Click and Go" easy software
- Ergonomic waterproof silicon keypad

OPTIONALS FUNCTIONS:

- AIS function displays commercial ships position on your route (connecting Lorenz AIS 2000 receiver or Lorenz AIS3000 RT transponder)
- Echo sounder system with graphic and automatic depth range (connecting a NMEA depth transducer)
- Dual frequency (50/200 KHz) fish finder function up to 1 Kw (RMS) power output (connecting Lorenz SD fish PRO)
- Weather forecast conditions shown on the route with Wave height and direction, Wind speed and direction, temperature, visibility and umidity (connecting weather forecast kit)
- Wind speed and angle data (connecting a NMEA wind sensor)
- User c-card option to store and download Track, Routes and User points

ALARMS:

- Anticollision Alarm (connecting AIS2000 Receiver or AIS3000 RT transponder)
- Grounding Alarm (Guardian Alarm function, querying the map's data and verifying potential danger to navigation)
- Alarms Handling
- Arrival Alarm
- Anchor Alarm
- Depth Alarm

TECHNICAL CHARACTERISTICS:

- 5 inches sun viewable LCD TFT 256-color display (Res. 240 x 320)
- 16 Channel WAAS GPS internal antenna (Compact X7), external WAAS/EGNOS GPS antenna (Sky X7)
- 3 In/Out via NMEA 0180/0183 signal (1 for GPS)
- Operating temperature -10 °C to +65 °C
- Power Consumption max 750 mA , 10-35 Vdc
- Dimensions (mm) W 209,5 x H 149 x D 45 (SKY) ; W 209,5 x H 149 x D 78 (Compact)
- Weight (gr.) 900 (Compact X7) - 850 (SKY X7)

LORENZ
MARINE ELECTRONICS

Lorenz Electronics
Italy - Via Lirene 10 - 20068 -
Pesciera Borromeo (Mi)
Tel. +39 0255301870
Fax +39 0255301933

One Touch To Choose Your World